

Ersatzteilliste

Herkules SH 50



Motorgeräte

Stand/Version: 05/2003

Fig. 1 HANDLE

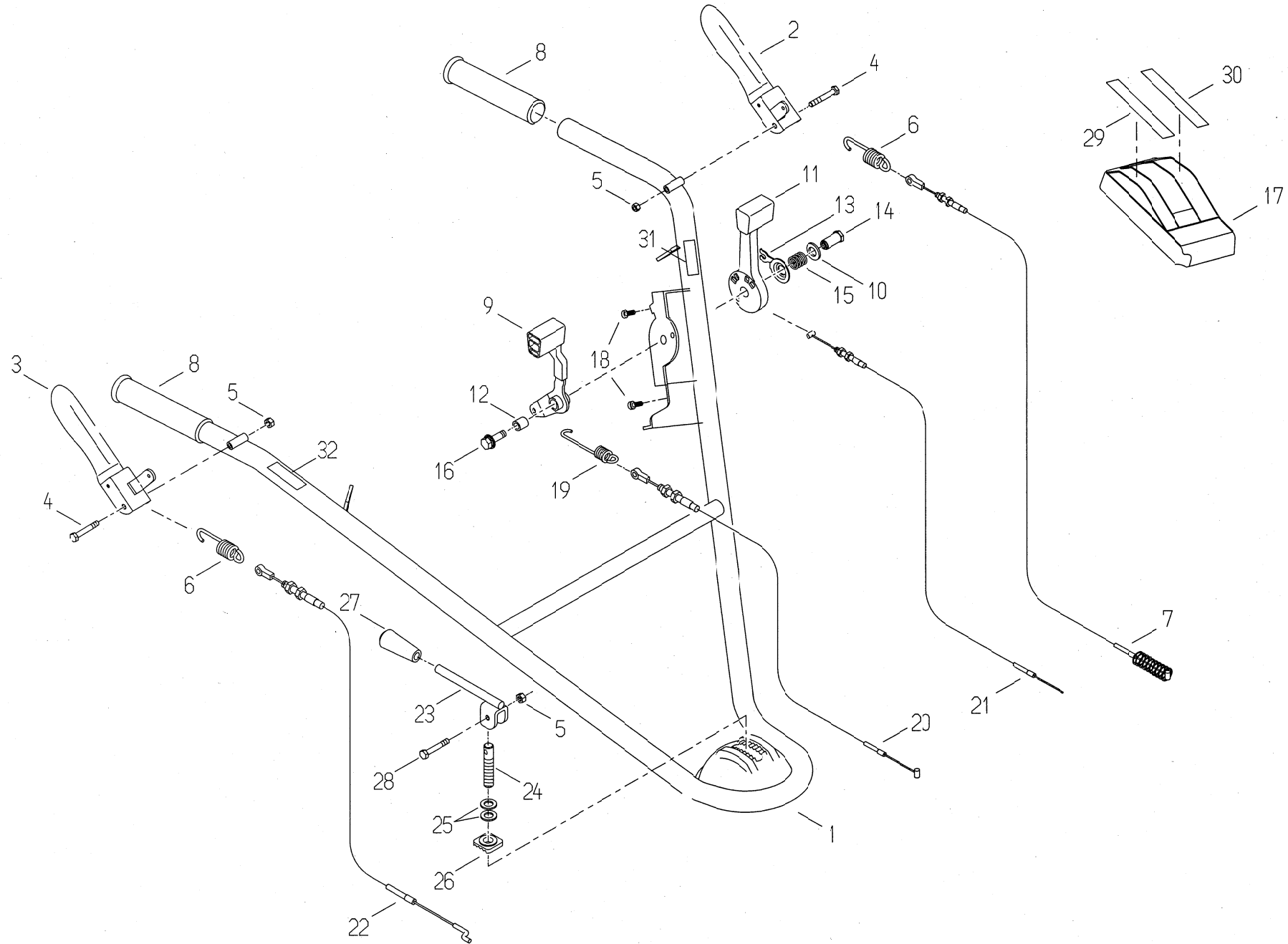


Fig.1 HANDLE

| Ref. | Parts No. | Parts Name | Quantity | | Remarks |
|------|----------------|-------------------------------|---------------|----------------|---------|
| | | | SH50 GX160 | SH50C GX160 | |
| 1 | 0206-10110 | Handle | 1 | 1 | |
| 2 | 0203-10200 | Driving Clutch Lever | 1 | 1 | |
| 3 | 0203-10300 | Knife Clutch Lever | 1 | 1 | |
| 4 | 89-1111-060402 | Hexagonal Bolt M6*40 | 2 | 2 | |
| 5 | 89-1551-060002 | U Nut M6 | 3 | 3 | |
| 6 | 80-1515-966-00 | Clutch Spring | 2 | 2 | |
| 7 | 0201-70200 | Driving Clutch Wire | 1 | 1 | |
| 8 | 83-1515-411-00 | Grip | 2 | 2 | |
| 9 | 80-1022-260-00 | Driving Change Lever | 1 | 1 | |
| 10 | 89-1711-120003 | Flat Washer 12 | 1 | 1 | |
| 11 | 80-1020-265-00 | Throttle Lever | 1 | 1 | |
| 12 | 80-1020-270-00 | Inner Collar | 1 | 1 | |
| 13 | 80-1020-264-00 | Control Washer | 1 | 1 | |
| 14 | 80-1020-262-00 | Control Lever Shaft | 1 | 1 | |
| 15 | 80-1020-263-00 | Control Lever Shaft Spring | 1 | 1 | |
| 16 | 89-1139-080302 | Hexagonal Bolt(PWSW) M8*30 | 1 | 1 | |
| 17 | 80-1020-231-00 | Control Cover | 1 | 1 | |
| 18 | 89-1161-050122 | Tapping Screw with Cross Hole | 2 | 2 | |
| 19 | 80-1020-967-00 | Driving Change Spring | 1 | 1 | |
| 20 | 0201-70300 | Driving Clutch Wire | 1 | 1 | |
| 21 | 0203-70200 | Throttle Wire | 1 | 1 | |
| 22 | 0201-70400 | Knife Tension Wire | 1 | 1 | |
| 23 | 0203-20400 | Handle Fixing Lever | 1 | 1 | |
| 24 | 0203-20500 | Handle Fixing Bolt | 1 | 1 | |
| 25 | 89-1851-120000 | Plate Spring M12 | 2 | 2 | |
| 26 | 80-1516-251-00 | Handle Fixing Washer | 1 | 1 | |
| 27 | 83-1210-425-00 | Lever Grip 10 | 1 | 1 | |
| 28 | 89-1113-060302 | Hexagonal Bolt(8T) M6*30 | 1 | 1 | |
| 29 | 80-1020-912-00 | Label, Driving Shift | 1 | 1 | |
| 30 | 80-1020-913-00 | Label, Throttle(H) | 1 | 1 | |
| 31 | 0206-70100 | Label, Driving | 1 | 1 | |
| 32 | 0206-70300 | Label, Blade | 1 | 1 | |

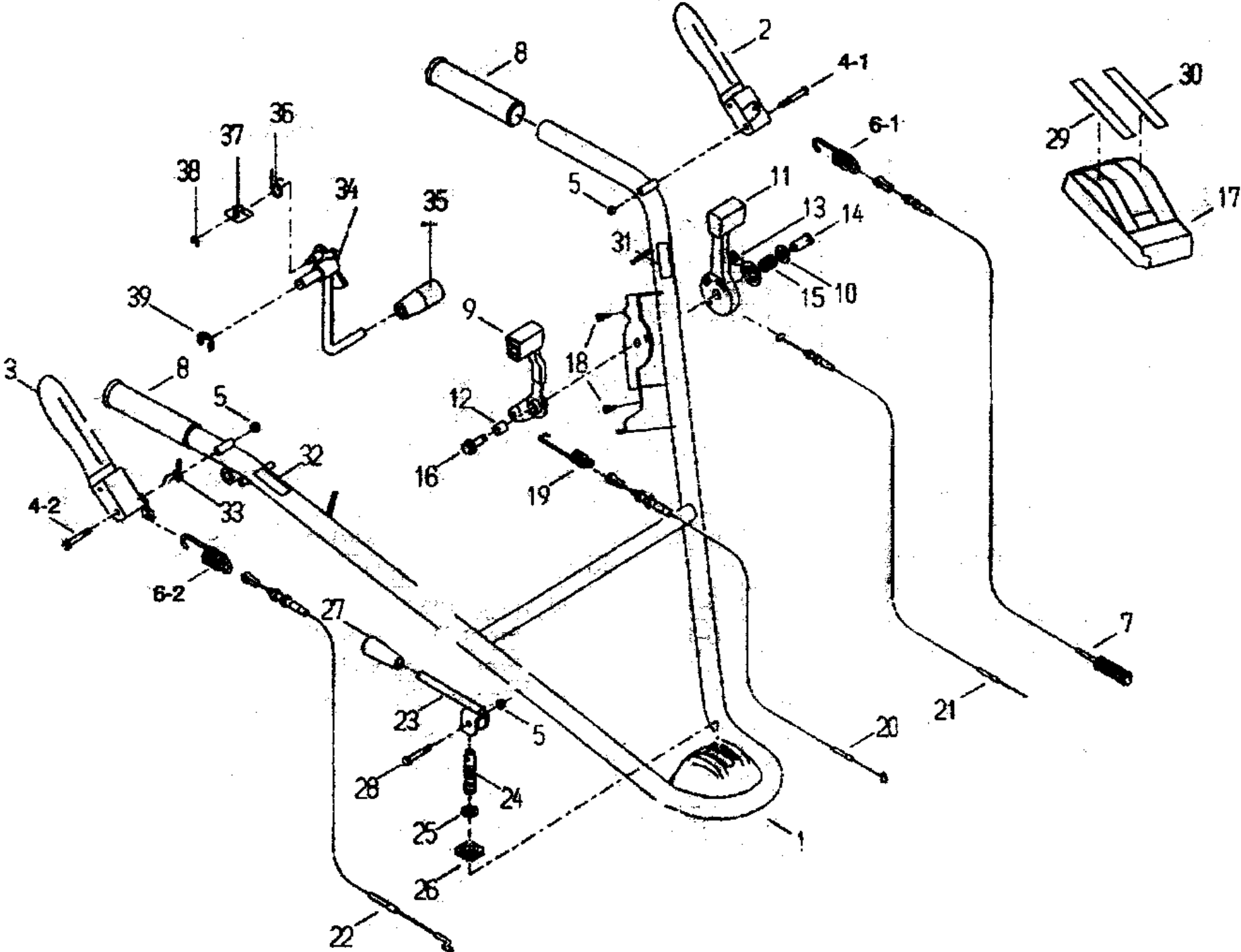
MEMO

*1)Interchangeable

*2)Serial Number : -XT02A00317

*3)Serial Number : XT02J00011-

Holm SH50C / 2-Action



| Nr | Artikel-Nr. | Bezeichnung | Anzahl | Bemerk. |
|-----|----------------|-------------------------------------|--------|---------|
| 1 | 0206-10110 | Handle | | *4) |
| | 0206-10200 | Handle | 1 | *5) |
| 2 | 0203-10200 | Driving Clutch Lever | 1 | |
| 3 | 0203-10300 | Knife Clutch Lever | | *4) |
| | 0206-10300 | Knife Clutch Lever | 1 | *5) |
| 4-1 | 89-1111-060402 | Hexagonal Bolt M6*40 | 1 | |
| 4-2 | 89-1113-060452 | Hexagonal Bolt M6*45 | 1 | *5) |
| 5 | 89-1551-060002 | U Nut M6 | 3 | |
| 6-1 | 80-1515-966-00 | Clutch Spring | 1 | |
| 6-2 | 80-1417-966-00 | Clutch Spring | 1 | *5) |
| 7 | 0201-70200 | Driving Clutch Wire | 1 | |
| 8 | 83-1515-411-00 | Grip | 2 | |
| 9 | 80-1022-260-00 | Driving Change Lever | 1 | |
| 10 | 89-1711-120003 | Flat Washer 12 | 1 | |
| 11 | 80-1020-265-00 | Throttle Lever | 1 | |
| 12 | 80-1020-270-00 | Inner Collar | 1 | |
| 13 | 80-1020-264-00 | Control Washer | 1 | |
| 14 | 80-1020-262-00 | Control Lever Shaft | 1 | |
| 15 | 80-1020-263-00 | Control Lever Shaft Spring | 1 | |
| 16 | 89-1139-080302 | Hexagonal Bolt(PWSW) M8*30 | 1 | |
| 17 | 80-1020-231-00 | Control Cover | 1 | |
| 18 | 89-1161-050122 | Tapping Screw with Cross Hole M5*12 | 2 | |
| 19 | 80-1020-967-00 | Driving Change Spring | 1 | |
| 20 | 0201-70300 | Driving Clutch Wire | 1 | |
| 21 | 0203-70200 | Throttle Wire | 1 | |
| 22 | 0201-70400 | Knife Tension Wire | 1 | |
| 23 | 0203-20400 | Handle Fixing Lever | 1 | |
| 24 | 0203-20500 | Handle Fixing Bolt | 1 | |
| 25 | 89-1851-120000 | Plate Spring M12 | 2 | |
| 26 | 80-1516-251-00 | Handle Fixing Washer | 1 | |
| 27 | 83-1210-425-00 | Lever Grip 10 | 1 | |
| 28 | 89-1113-060302 | Hexagonal Bolt(8T) M6*30 | 1 | |
| 29 | 80-1020-912-00 | Label, Driving Shift | 1 | |
| 30 | 80-1020-913-00 | Label, Throttle(H) | 1 | |
| 31 | 0206-70100 | Label, Driving | 1 | |
| 32 | 0206-70300 | Label, Blade | | *4) |
| | 0206-70900 | Label, Blade | 1 | *5) |
| 33 | 0206-70800 | Lever return spring | 1 | *5) |
| 34 | 0206-10400 | Blade tension lever | 1 | *5) |
| 35 | 80-1417-255-00 | Lever Grip(Red) 10 | 1 | *5) |
| 36 | 80-1417-972-00 | Stopper return spring | 1 | *5) |
| 37 | 80-1417-253-00 | Stopper | 1 | *5) |
| 38 | 89-2521-000050 | E Type Ring 5 | 1 | *5) |
| 39 | 89-2521-000100 | E Type Ring 10 | 1 | *5) |

*1) Interchangeable

*2) Serial Number : -XT02A00317

*3) Serial Number : XT02J00011-

*4) Serial Number : -XT02M00094

*5) Serial Number : XT03C00001-

Fig.2 TRANSMISSION

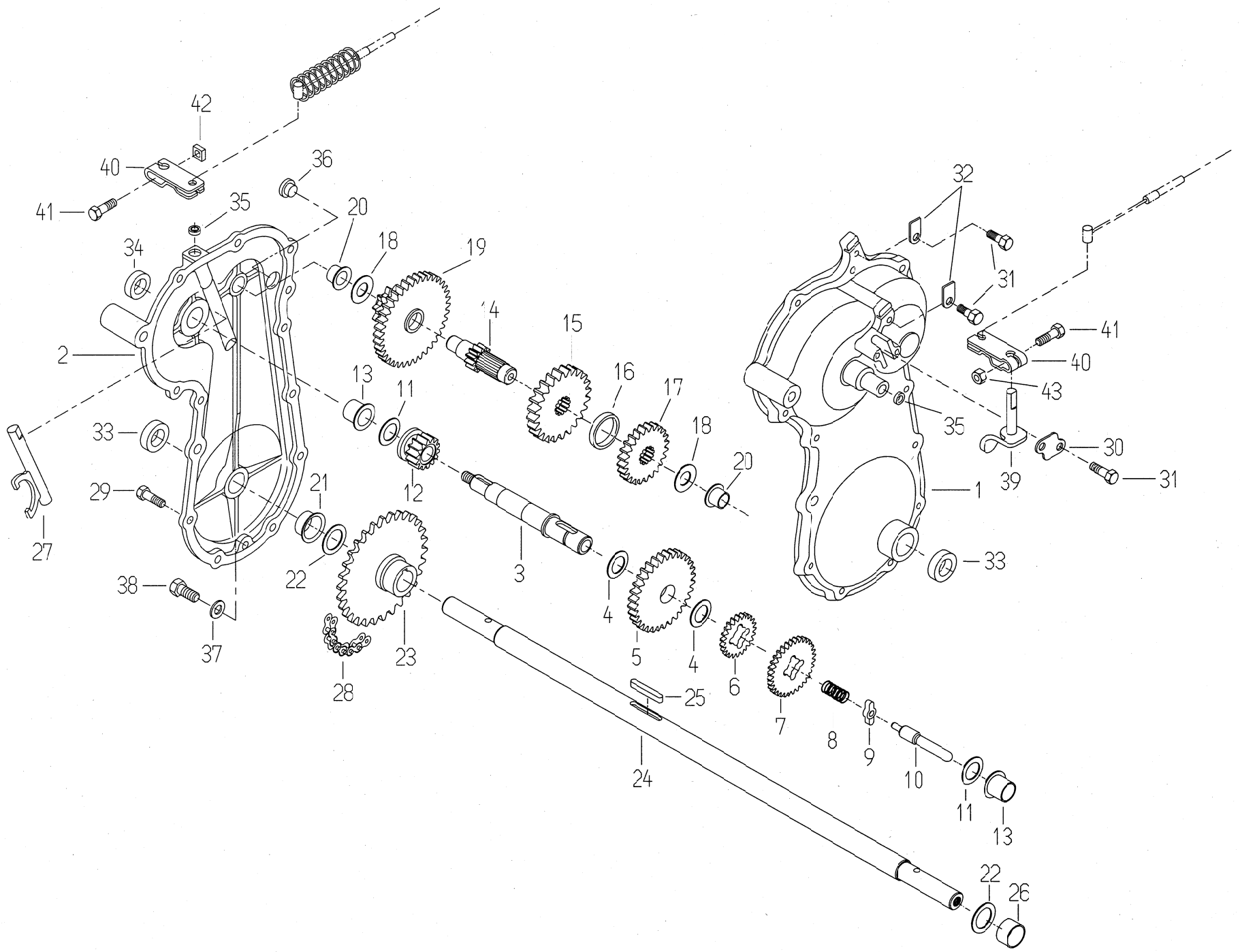


Fig.2 TRANSMISSION

| Ref. | Parts No. | Parts Name | Quantity | | Remarks |
|------|----------------|--------------------------------------|---------------|----------------|---------|
| | | | SH50 GX160 | SH50C GX160 | |
| 1-43 | 0203-00100 | Transmission ASSY | 1 | 1 | |
| 1 | 0203-00200 | Transmission Case (L) | 1 | 1 | |
| 2 | 0203-00300 | Transmission Case (R) | 1 | 1 | |
| 3 | 80-1516-118-00 | Main Shaft | 1 | 1 | |
| 4 | 83-1020-363-00 | Thrust Washer 16*24*1 | 2 | 2 | |
| 5 | 80-1515-123-00 | Main Shaft Gear 59T | 1 | 1 | |
| 6 | 80-1020-123-10 | Low Gear | 1 | 1 | |
| 7 | 80-1515-122-00 | Main Shaft Gear 32T | 1 | 1 | |
| 8 | 80-1020-161-00 | Driving Shift Spring | 1 | 1 | |
| 9 | 80-1020-108-00 | Driving Shift Guide | 1 | 1 | |
| 10 | 80-1020-107-00 | Driving Change Shaft | 1 | 1 | |
| 11 | 83-1020-361-00 | Thrust Washer 15*24*1 | 2 | 2 | |
| 12 | 80-1515-119-00 | Driving Clutch Gear 15T | 1 | 1 | |
| 13 | 89-3511-015150 | Collar DU Bush 15*15*23F | 2 | 2 | |
| 14 | 80-1516-127-00 | 2nd Shaft | 1 | 1 | |
| 15 | 80-1516-129-00 | 2nd Shaft 48T | 1 | 1 | |
| 16 | 80-1020-122-00 | Collar | 1 | 1 | |
| 17 | 80-1516-128-00 | 2nd Shaft 39T | 1 | 1 | |
| 18 | 83-1020-355-00 | Thrust Washer 12*24*1 | 2 | 2 | |
| 19 | 80-1515-131-00 | 2nd Shaft Sprocket 10T | 1 | 1 | |
| 20 | 89-3511-012100 | Collar DU Bush 12*10*20F | 2 | 2 | |
| 21 | 89-3511-018100 | Collar DU Bush 18*10*26F | 1 | 1 | |
| 22 | 83-1830-368-00 | Thrust Washer 18*26*1 | 2 | 2 | |
| 23 | 0203-00400 | 30T Sprocket Boss | 1 | 1 | |
| 24 | 0203-00500 | Axle | 1 | 1 | |
| 25 | 89-2150-050350 | Key(round) 5*35 | 1 | 1 | |
| 26 | 89-3510-018120 | DU Bush 18*12 | 1 | 1 | |
| 27 | 80-1515-114-10 | Driving Clutch Fork | 1 | 1 | |
| 28 | 89-6512-035062 | Chain #35-62L | 1 | 1 | |
| 29 | 83-1515-148-00 | Hexagonal Tap Tight M6*22 | 12 | 12 | |
| 30 | 80-1515-185-00 | Driving Shift Arm Holder | 1 | 1 | |
| 31 | 83-1020-148-00 | Hexagonal Tap Tight M6*14 | 4 | 4 | |
| 32 | 80-1515-186-00 | Wire Holder | 2 | 2 | |
| 33 | 89-5121-183008 | Oil Seal UE. 18.30.8 | 2 | 2 | |
| 34 | 89-5121-152507 | Oil Seal UE. 15.25.7 | 1 | 1 | |
| 35 | 89-5131-081404 | Oil Seal UE. 8.14.4 | 2 | 2 | |
| 36 | 83-1517-685-00 | Oil Cap | 1 | 1 | |
| 37 | 83-1415-348-00 | Packing 8.5*16*1.3 | 1 | 1 | |
| 38 | 83-1020-143-00 | Hexagonal Tap Tight M8*18 | 1 | 1 | |
| 39 | 80-1515-106-00 | Driving Shift Arm | 1 | 1 | |
| 40 | 80-1020-193-10 | Driving Change Arm | 2 | 2 | |
| 41 | 89-1144-060253 | Hexagonal Bolt with Cross Hole(PW.S) | 2 | 2 | |
| 42 | 83-1020-198-00 | Square Nut M6 | 1 | 1 | |
| 43 | 89-1511-060043 | Hexagonal Nut M6 | 1 | 1 | |

MEMO

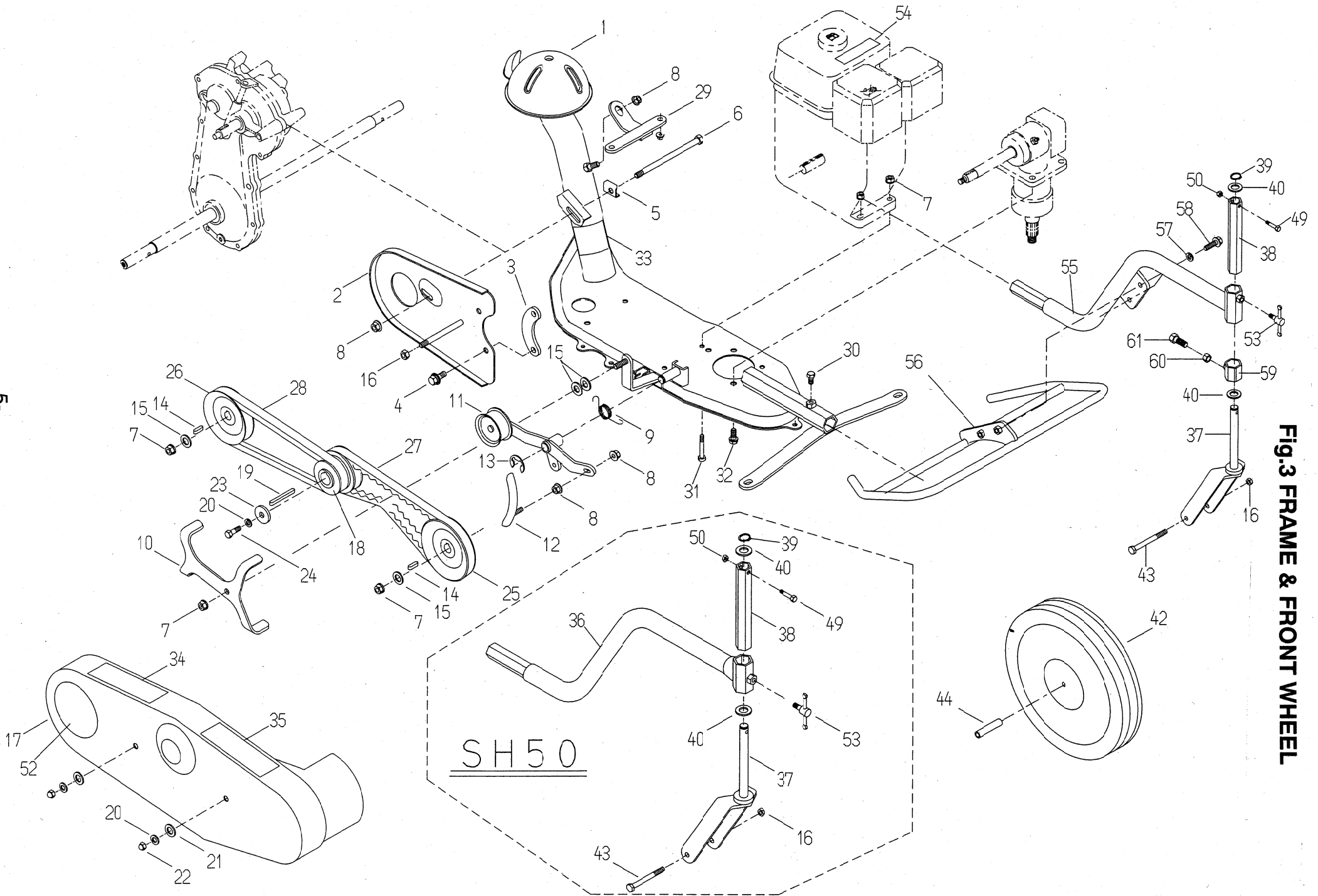


FIG.3 FRAME & FRONT WHEEL

Fig.3 FRAME & FRONT WHEEL

| Ref. | Parts No. | Parts Name | Quantity | | Remarks |
|------|----------------|-----------------------------------|---------------|----------------|---------|
| | | | SH50 GX160 | SH50C GX160 | |
| 1 | 0206-20110 | Engine Frame | 1 | 1 | |
| 2 | 0203-60100 | Belt Cover Inside | 1 | 1 | |
| 3 | 80-1516-509-00 | Belt Cover Inside Spacer | 1 | 1 | |
| 4 | 89-1233-080202 | Mini Hexagonal Bolt(PWSW) M8*20 | 2 | 2 | |
| 5 | 80-1517-507-00 | Metal Holder | 1 | 1 | |
| 6 | 89-1213-081052 | Mini Hexagonal Bolt(8T) M8*105 | 1 | 1 | |
| 7 | 89-1543-080002 | Mini Hexagonal Nut(SW) M8 | 7 | 7 | |
| 8 | 89-1631-080042 | Flange Mini Hexagonal Nut M8 | 4 | 4 | |
| 9 | 80-1515-547-00 | Knife Tension Return Spring | 1 | 1 | |
| 10 | 80-1516-575-00 | Belt Holder | 1 | 1 | |
| 11 | 0203-20210 | Knife Tension Arm | 1 | 1 | |
| 12 | 0203-20310 | Knife Brake | 1 | 1 | |
| 13 | 89-2521-000100 | E-Type Snap Ring 10 | 1 | 1 | |
| 14 | 89-2150-050180 | Key(round) 5*18 | 2 | 2 | |
| 15 | 89-1713-080002 | Flat Washer 8 | 4 | 4 | |
| 16 | 89-1561-080002 | Mini U Nut M8 | 2 | 2 | |
| 17 | 0206-60100 | Belt Cover | 1 | 1 | |
| 18 | 80-1517-514-10 | Engine Pulley(H) | 1 | 1 | |
| 19 | 89-2151-050300 | Key(half round) 5*30 | 1 | 1 | |
| 20 | 89-1750-080002 | Spring Washer 8 | 3 | 3 | |
| 21 | 89-1711-080002 | Flat Washer 8 | 2 | 2 | |
| 22 | 89-1671-080042 | Mini Bag Nut M8 | 2 | 2 | |
| 23 | 83-1020-312-00 | Washer 8*30*3.2 | 1 | 1 | |
| 24 | 89-1213-080202 | Mini Hexagonal Bolt(8T) M8*20 | 1 | 1 | |
| 25 | 80-1516-571-00 | Knife Pulley | 1 | 1 | |
| 26 | 0203-70100 | Transmission Pulley | 1 | 1 | |
| 27 | 89-6132-002401 | V Belt SA24HP II | 1 | 1 | |
| 28 | 89-6122-002401 | V Belt LA24 | 1 | 1 | |
| 29 | 0206-20200 | Anti-Vibration Stay | 1 | 1 | |
| 30 | 89-1211-080162 | Mini Hexagonal Bolt M8*16 | 1 | 1 | |
| 31 | 89-1213-080402 | Mini Hexagonal Bolt(8T) M8*40 | 4 | 4 | |
| 32 | 89-1232-080202 | Mini Hexagonal Bolt(SW) M8*20 | 4 | 4 | |
| 33 | Not for Sale | Label, Serial Number | 1 | 1 | |
| 34 | 80-1488-928-00 | Label, Caution for Belt Involving | 1 | 1 | |
| 35 | 83-1488-907-00 | Label, Caution for Slope | 1 | 1 | |
| 36 | 0206-30210 | Front Wheel Arm | 1 | 1 | *2) |
| 37 | 0206-30320 | Front Wheel Fork | 1 | 1 | |
| 38 | 0206-30410 | Front Wheel Fork Bracket | 1 | 1 | |
| 39 | 89-2511-000160 | Snap Ring 16 | 1 | 1 | |
| 40 | 83-1020-363-00 | Thrust Washer 16*24*1 | 2 | 2 | |
| 42 | 80-1517-727-00 | Front Wheel | 1 | 1 | |
| 43 | 89-1213-080802 | Mini Hexagonal Bolt(8T) M8*80 | 1 | 1 | |
| 44 | 80-1517-728-00 | Front Wheel Collar | 1 | 1 | |
| 49 | 89-1113-060352 | Hexagonal Bolt(8T) M6*35 | 1 | 1 | |
| 50 | 89-1551-060002 | U Nut M6 | 1 | 1 | |
| 52 | 0203-71000 | Label, Belt Cover | 1 | 1 | |
| 53 | 83-1210-484-00 | Free Handle M8*20 | 1 | 1 | |
| 54 | 83-1415-909-00 | Sticker for Engine (Z18-6) | 1 | 1 | |
| 55 | 0206-30220 | Front Wheel Arm | | 1 | *1) *3) |
| 56 | 0206-80600 | Front Guard CMP | | 1 | *3) |
| 57 | 89-1750-080002 | Spring Washer 8 | | 2 | *3) |
| 58 | 89-1213-080202 | Mini Hexagonal Bolt(8T) M8*20 | | 2 | *3) |

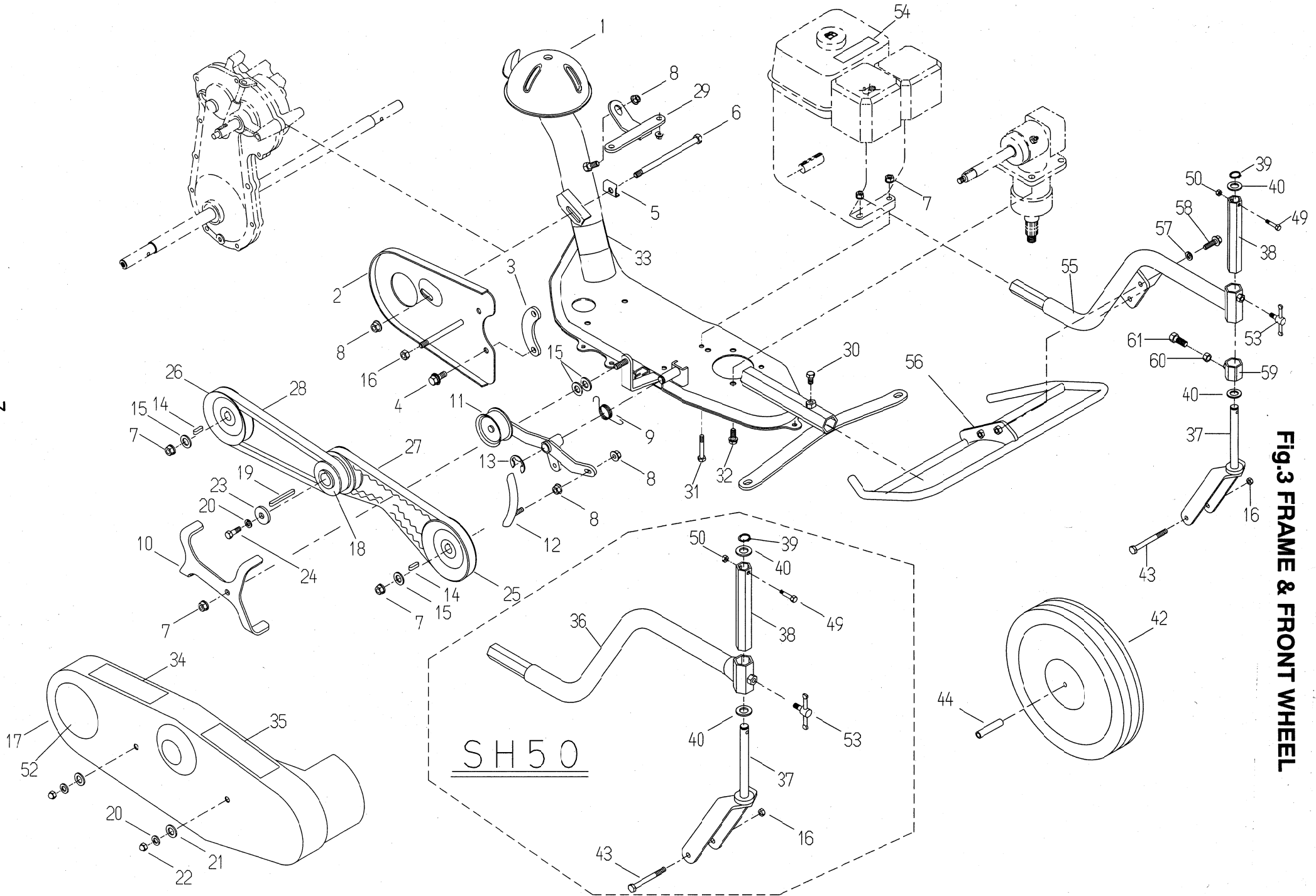


FIG. 3 FRAME & FRONT WHEEL

Fig.3 FRAME & FRONT WHEEL

| Ref. | Parts No. | Parts Name | Quantity | | Remarks |
|------|----------------|-------------------------------|---------------|----------------|---------|
| | | | SH50 GX160 | SH50C GX160 | |
| 59 | 0206-80200 | Cutting Height Stopper CMP | | 1 | *3) |
| 60 | 89-1611-080042 | Mini Hexagonal Nut M8 | | 1 | *3) |
| 61 | 89-1213-080252 | Mini Hexagonal Bolt(8T) M8*25 | | 1 | *3) |

MEMO

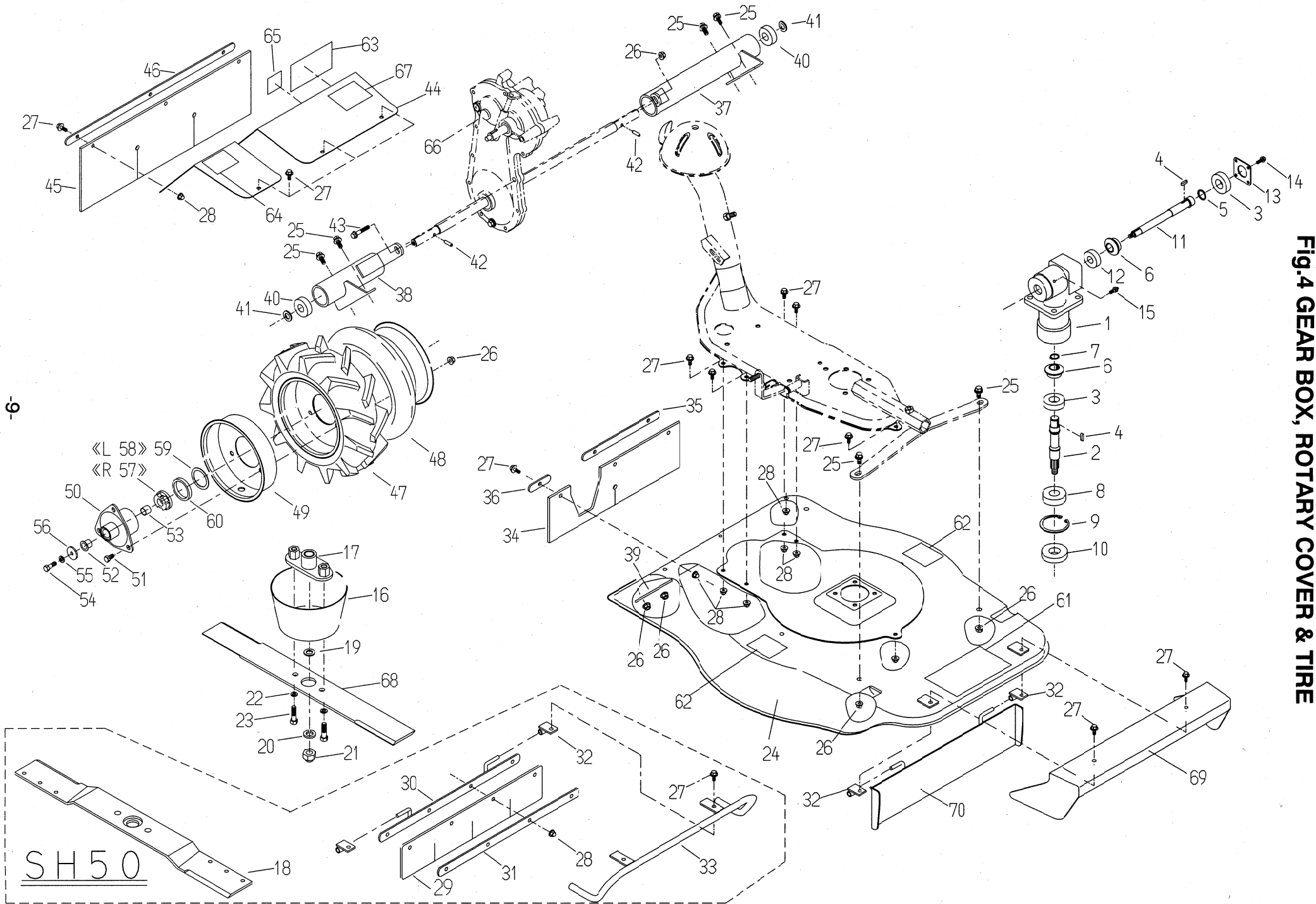


FIG.4 GEAR BOX, ROTARY COVER & TIRE

Fig.4 GEAR BOX, ROTARY COVER & TIRE

| Ref. | Parts No. | Parts Name | Quantity | | Remarks |
|-------|----------------|--------------------------------------|---------------|----------------|---------|
| | | | SH50 GX160 | SH50C GX160 | |
| 1-15 | 0203-51000 | Gear Box ASSY | 1 | 1 | |
| 1 | 0203-50100 | Gear Box | 1 | 1 | |
| 2 | 0203-50300 | Vertical Shaft | 1 | 1 | |
| 3 | 89-3115-060044 | Bearing 6004 2RS | 2 | 2 | |
| 4 | 89-2150-050180 | Key(round) 5*18 | 2 | 2 | |
| 5 | 83-1515-626-00 | Thrust Washer 22*27*2 | 1 | 1 | |
| 6 | 80-1517-618-00 | Straight Bevel 20T | 2 | 2 | |
| 7 | 89-2511-000170 | Snap Ring 17 | 1 | 1 | |
| 8 | 89-3115-062044 | Bearing 6204 2RS | 1 | 1 | |
| 9 | 89-2512-000470 | Snap Ring 47 | 1 | 1 | |
| 10 | 89-5131-204706 | Oil Seal KE 20.47.6 | 1 | 1 | |
| 11 | 0203-50200 | Horizontal Shaft | 1 | 1 | |
| 12 | 89-3115-062024 | Bearing 6202 2RS | 1 | 1 | |
| 13 | 80-1515-607-00 | Gear Box Cap B | 1 | 1 | |
| 14 | 83-1020-148-00 | Hexagonal Tap Tight M6*14 | 4 | 4 | |
| 15 | 83-1415-975-00 | Grease Nipple M6 | 1 | 1 | |
| 16 | 80-1035-836-00 | Knife Neck Guard | 1 | 1 | |
| 17 | 0203-50610 | Knife Bracket | 1 | 1 | |
| 18 | 80-1035-821-00 | Blade | 1 | 1 | *2) |
| 19 | 89-1711-120002 | Flat Washer 12 | 1 | 1 | |
| 20 | 89-1750-120002 | Spring Washer 12 | 1 | 1 | |
| 21 | 0203-70800 | Bag Nut(slender) M12 | 1 | 1 | |
| 22 | 89-1750-100002 | Spring Washer 10 | 2 | 2 | |
| 23 | 89-1254-100252 | Flange Hexagonal Bolt(slender) M10*2 | 2 | 2 | |
| 24 | 0203-50510 | Rotary Cover | 1 | 1 | |
| 25 | 89-1233-080202 | Mini Hexagonal Bolt(PWSW) M8*20 | 6 | 6 | |
| 26 | 89-1631-080042 | Flange Mini Hexagonal Nut M8 | 13 | 13 | |
| 27 | 89-1137-060152 | Hexagonal Bolt(PW) M6*15 | 20 | 20 | |
| 28 | 83-1575-189-00 | Flange Bag Nut M6 | 20 | 20 | |
| 29 | 80-1035-734-00 | Front Flapper | 1 | 1 | *2) |
| 30 | 80-1035-735-00 | Front Flapper Setting | 1 | 1 | *2) |
| 31 | 80-1035-736-00 | Front Flapper Holder | 1 | 1 | *2) |
| 32 | 80-1035-737-00 | Flapper Shaft Receiver | 2 | 2 | |
| 33 | 0206-80100 | Foot Guard | 1 | 1 | *2) |
| 34 | 0203-60600 | Flapper B | 1 | 1 | |
| 35 | 0203-60700 | Flapper Holder A | 1 | 1 | |
| 36 | 0203-60800 | Flapper Holder B | 1 | 1 | |
| 37 | 0203-60300 | Axle Cover(L) | 1 | 1 | |
| 38 | 0203-60400 | Axle Cover(R) | 1 | 1 | |
| 39 | 0203-60500 | Axle Reinforcing Plate | 2 | 2 | |
| 40 | 89-3115-062024 | Bearing 6202 2RS | 2 | 2 | |
| 41 | 83-1020-361-00 | Thrust Washer 15*24*1 | 2 | 2 | |
| 42 | 89-2142-050250 | Parallel Pin 5*25 | 2 | 2 | |
| 43 | 89-1251-080502 | Flange Mini Hexagonal Bolt M8*50 | 1 | 1 | |
| 44 | 0203-60910 | Transmission Cover | 1 | 1 | |
| 45 | 0203-61000 | Flapper A | 1 | 1 | |
| 46 | 0203-61100 | Flapper Holder C | 1 | 1 | |
| 47-49 | 80-1515-411-00 | Tire ASSY(without Boss) | 2 | 2 | |
| 47 | 80-1515-401-00 | Tire(3.25*5) | 2 | 2 | |
| 48 | 80-1515-404-00 | Tube | 2 | 2 | |
| 49 | 80-1515-407-00 | Wheel | 2 | 2 | |
| 50 | 0203-30700 | Wheel Boss | 2 | 2 | |

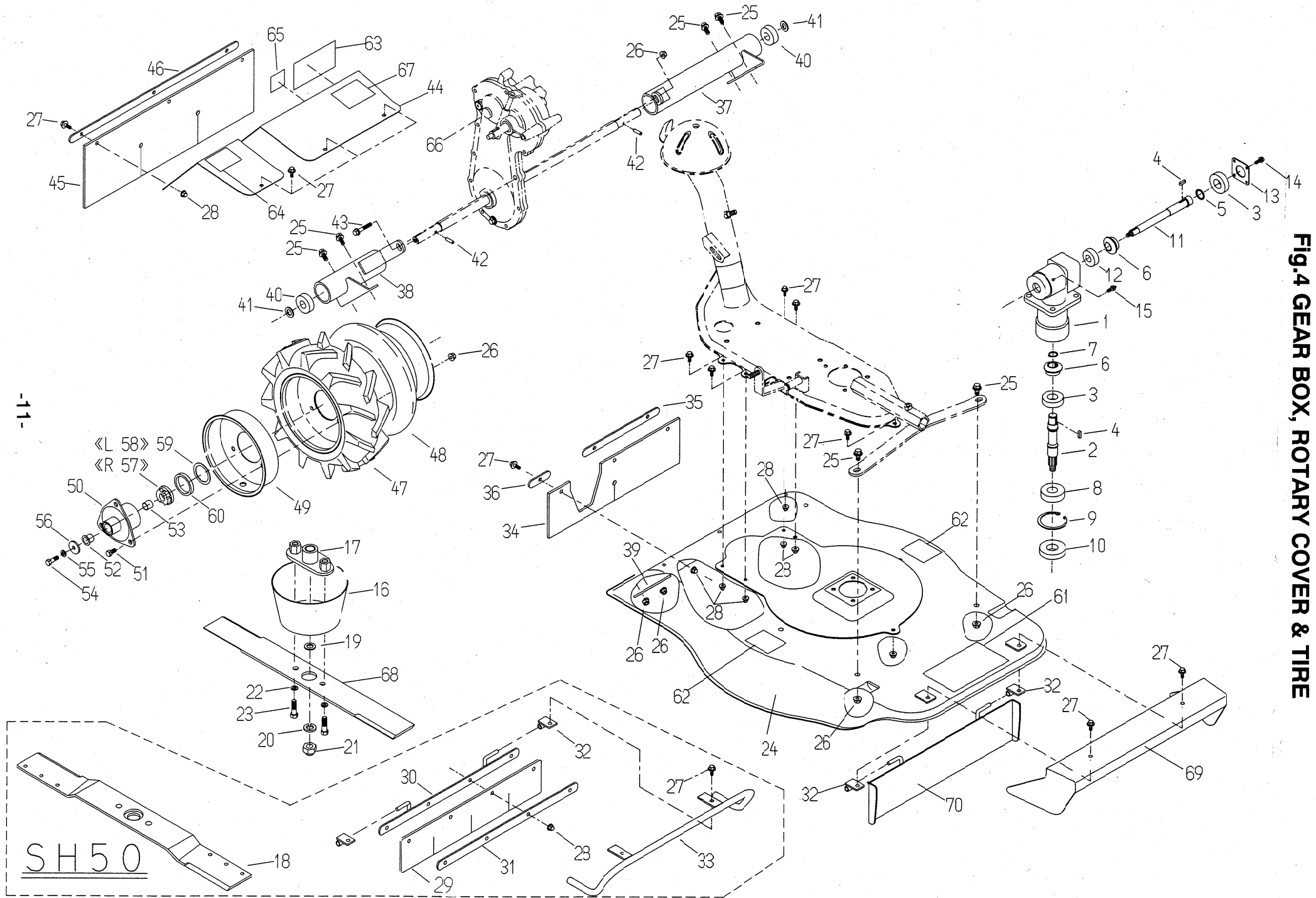


FIG.4 GEAR BOX, ROTARY COVER & TIRE

SH50

Fig.4 GEAR BOX, ROTARY COVER & TIRE

| Ref. | Parts No. | Parts Name | Quantity | | Remarks |
|-----------|-------------------|-------------------------------|---------------|----------------|----------------|
| | | | SH50 GX160 | SH50C GX160 | |
| 51 | 89-1211-080162 | Mini Hexagonal Bolt M8*16 | 6 | 6 | |
| 52 | 89-3511-015150 | Collar DU Bush 15.15.23F | 2 | 2 | |
| 53 | 89-3510-015150 | DU Bush 15.15. | 2 | 2 | |
| 54 | 89-1213-080252 | Mini Hexagonal Bolt(8T) M8*25 | 2 | 2 | |
| 55 | 89-1750-080002 | Spring Washer 8 | 2 | 2 | |
| 56 | 83-1020-312-00 | Washer 8*30*3.2 | 2 | 2 | |
| 57 | 80-1020-459-00 | Ratchet(R) | 1 | 1 | |
| 58 | 80-1020-458-00 | Ratchet(L) | 1 | 1 | |
| 59 | 0203-70600 | Felt Spacer | 2 | 2 | |
| 60 | 0203-70400 | Clutch Guide Seal | 2 | 2 | |
| 61 | 0203-71100 | Label, Main (Shuttle Mower) | 1 | 1 | |
| 62 | 80-1488-926-00 | Label, Caution for Knife | 2 | 2 | |
| 63 | 80-1484-A47-00 | Label, Caution (large) | 1 | 1 | |
| 64 | 83-1415-913-00 | Label, Protection for Eyes | 1 | 1 | |
| 65 | Not for Sale | Label, CE | 1 | 1 | |
| 66 | 83-1516-916-00 | Label, Gear Oil | 1 | 1 | |
| 67 | 0203-70700 | Label SH50 | 1 | | *2) |
| | 0206-70400 | Label SH50C | | 1 | *3) |
| 68 | 0214-70700 | Blade | | 1 | *1) *3) |
| 69 | 0206-80700 | Front Side Cover | | 1 | *1) *3) |
| 70 | 0214-60200 | Front Flapper CMP | | 1 | *1) *3) |

MEMO