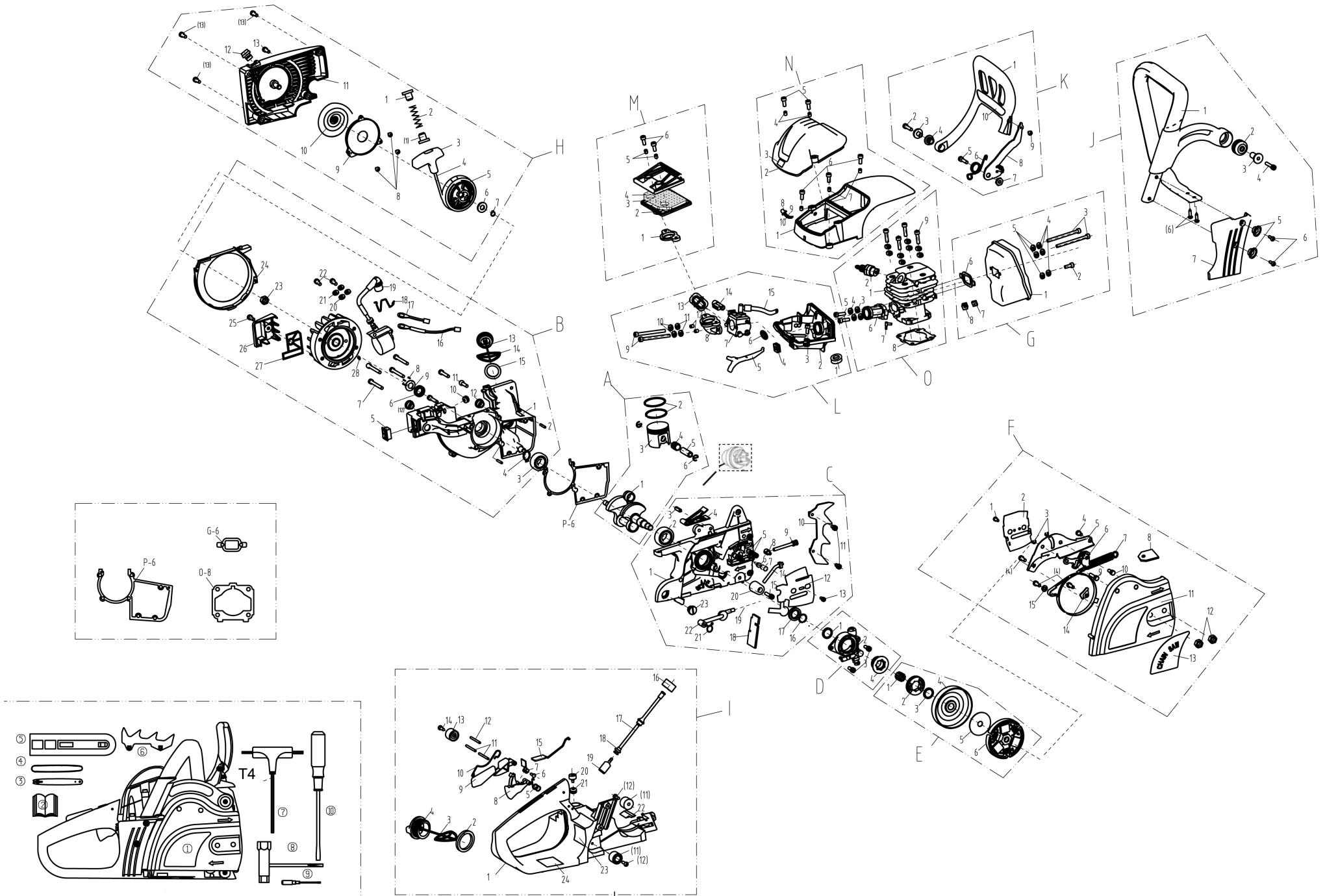


# Raptor<sup>®</sup> 243

made for garden



No:	„obj.č.“	ITEM	Qty
<b>A</b>	<b>A-01P</b>	<b>motion spare parts assembly</b>	
1	A-01P	crank link rod unit	1
2	A-02	piston ring Ø40X1.2	2
3	A-03	piston	1
4	A-04	needle bearing K121512	1
5	A-05	piston pin	1
6	A-06	piston pin circlip	2
<b>B</b>	<b>A-01P</b>	<b>left crankcase assembly</b>	
1	A-01P	left crankcase	1
2	A-01P	finxing pin Ø3X16	2
3	A-01P	bearing 6201P5	1
4	A-01P	shield ring D=20	1
5	B-05	flame out switch KND16A/250V	1
6	B-06	oil seal 12X20X5	1
7		M5X30	4
8		M3X8	3
9		oil seal pressing cover	1
10		flame out wire sheath	1
11		M3X12	1
12		absorber blind nut	2
13	B-13	oil tank cap	1
14		pothook	1
15	B-15	O ring 20X3.55	1
16		flame out wire 2.5X252	1
17		earth wire 2.5X62	1
18		high-voltage wire circlip	1
19	B-19	Ignition	1
20		washer 5	2
21		spring washer 5	2
22		M5X20	2
23	B-23	M8X1	1
24	B-24	air boot	1

No:	„obj.č.“	ITEM	Qty
25		M5X16	1
26		air intake cover	1
27		air intake cover screen	1
28	B-28	key 3X5X13	1
29	B-29	magnetic bearing flywheel	1
<b>C</b>	<b>A-01P</b>	<b>right crankcase assembly</b>	
1	A-01P	right crankcase	1
2	A-01P	bearing 6205P5	1
3	A-01P	elastic pin 5X20	1
4	A-01P	leaf spring	1
5	C-05	bar stud	2
6	C-06	breath mouth	1
7	C-07	cleaner block of breath mouth	1
8	C-08	adjust screw	1
9	C-09	adjust shaft	1
10	C-10	spike bar	1
11		M5X8	2
12	C-12	big washer 1	1
13		M4X8	1
14	C-14	output-oil tupe	1
15		M5X25	1
16		circlip of outaxis	1
17	A-01P	oil seal 15X24X5.5	1
18		wood-dust baffle	1
19	C-19	steel wire filter screen	1
20	C-20	chain rupture appartus	1
21		10# circlip	1
22	C-22	input-oil tube	1
23		absorber blind nut	1
<b>D</b>		<b>oil pump</b>	
1	D-01	worm bushing	1
2	D-02	oil pump	1

No:	„obj.č.“	ITEM	Qty
3		M5X12	2
4	D-04	worm	1
E		<b>clutch assebmly</b>	
1	E-01	needle bearing K121512	1
2	E-02	sprocket	1
3		adjust washer	1
4	E-04	driven wheel	1
5	E-05	clutch pad	1
6	E-06	clutch	1
F	F-00	<b>brake struction</b>	
1		M4X8	1
2		bar washer 2	1
3		shield ring 4	2
4		M5X8	2
5		brake cover	1
6	F-06	brake systme(including brake strap	1
7	F-07	brake spring	1
8		brake spring washer	1
9		brake link pin	1
10		brake rocker pin	1
11	F-11	sprocket cover	1
12	F-12	M8X1	2
13		name plate	1
14	F-14	brake strape pressure plate	1
15		washer 6	1
G		<b>silencer</b>	
1	G-01	silencer	
2		M5X8	1
3	G-03	M5X60	2
4		spring washer 5	2
5		washer 5	2
6		silencer pad	1

No:	„obj.č.“	ITEM	Qty
7	G-07	nut M5	1
8	G-08	nut fixing frame	1
H	H-00	<b>starter assembly</b>	
1		buffer spring shell	2
2		buffer spring	1
3	H-03	starter grip	1
4		starter cable 3,5*950	1
5	H-05	cable pulley	1
6		big washer 8	1
7		elastic shield ring	1
8		screw ST3,2*10	3
9	H-09	spring housing	1
10	H-10	starter coiling spring	1
11	H-11	starter housing	1
12		protective line shell	1
13		M5*16	4
I		<b>rear handle assembly</b>	
1		rear handle	1
2	I-02	O ring 32,5*4	1
3		pothook	1
4	I-04	fuel tank cover	1
5	I-05	accelerator switchs torsion	1
6		rivet 1.5X11	1
7		accelerator pushing plate	
8	I-08	accelerator switch	1
9		safety locking button	1
10	I-10	safety locking button's spring	1
11		pin 3X32	2
12		pin 3X29	1
13	I-13	absorber discreteness	3
14		screw ST4.2X16	3
15	I-15	accelerator rod discreteness	1

No:	„obj.č.“	ITEM	Qty
16		seal block	1
17	I-17	fuel tube	1
18		8# circlip	1
19	I-19	fuel cleaner	1
20	I-20	breath apparatus	1
21	I-21	breath apparatus rubber shell	1
22	I-22	absorber washer	
23		name plate	
24		fuel warning label	
<b>J</b>		<b>front handle assembly</b>	
1	J-01	front handle	1
2	J-02	absorber sheath	1
3		pin axis	1
4		M5X30	1
5	J-05	handle sheath	2
6		screw ST4.2X16	4
7	J-07	side cover	1
<b>K</b>		<b>brake handle assembly</b>	
1	K-01	brake handle	1
2		M5X25	1
3		screw sheath	1
4	K-04	brake handle rubber sheath	1
5		M5X20	1
6	K-06	brake torsion	1
7		brake special nut	1
8	K-08	control arm	1
9		screw ST4.2X16	1
10		warning label	1
<b>L</b>		<b>admission assembly</b>	
1		oil tube sheath	1
2	L-02	rack of admission housing	1
3		M5X8	1

No:	„obj.č.“	ITEM	Qty
4		choke rod rubber	1
5	L-05	choke rod	1
6		admission muff	1
7	L-07	carburetor	1
8	L-08	admission line	1
9	L-09	M5X44	2
10		spring washer 5	2
11		washer 5	2
12		steel sheath of admission line 5	2
13	L-13	oil needle sheath	1
14		adjust rubber sheath	1
15		suction tube	1
<b>M</b>		<b>airfilter assembly</b>	
1		seal washer of airfilter	1
2	M-02	airfilter(up, down shelf)	1
3		sponge of airfiler	1
4		steel screen	1
5		steel sheath 5.2X7X10	2
6		M5X16	2
<b>N</b>		<b>cylinder cover assembly</b>	
1		cylinder cover	1
2	N-02	airfilter cover	1
3		CE label	1
4		steel sheath of airfilter 5.2X7X 2	2
5		M5X16	2
6		M5X20	3
7		steel sheath of cycliner cover 5	3
8	71-P-01	oil vacuole	1
9		absorbing vitta	1
10		circle vitta	1
<b>O</b>		<b>cylinder assembly</b>	
1	O-01	cylinder	1

No:	„obj.č.“	ITEM	Qty
2	O-02	spark plug	1
3		washer 5	6
4		spring washer 5	6
5		M5X16	2
6	O-06	admission tube	1
7		oil-intake mouth	1
8	O-08	cyclinder pad	1
9		M5X25	4
P		necessary accessories with machine	
3	P-03	bar	1
4	25Q64E	chain	1
5	75118069	bar sheath	1
6	A-01	case pad	1
7			
8			
9		extra accessories	
10	945KLÍČ	t-shaped spanner T4	1
11		„-“shaped screwdriver (adjust c 11	1
12		„-“ shaped screwdriver	1
13		sleeve spanner	1